

mPowerTools

You'll never go back to scripting again!

**Perform multiple Active Directory tasks at once.
Tackle Active Directory chores in bulk.**

Some active directory tasks are quick and easy, like changing a user's street address. Something this simple just takes a minute, right? Try changing the street address for each user in an entire division and suddenly you're there all night **AGAIN**. That's why you need **mPowerTools**.

Designed for administrators who want to tackle Active Directory chores in bulk, mPowerTools streamlines the configuration and execution of common IT administrative tasks. An efficient and flexible Search and Replace engine eliminates time spent manually digging through Active Directory to find and change information. mPowerTools provides over 100 preconfigured reports that can also be customized - or, you can create your own reports - without scripting.

Eliminate complex, time-consuming scripting; give your Admins more power with these mPowerTools features!

- Simple, task-oriented user interface streamlines the configuration and execution of common administrative tasks
- Easily reset admin passwords on remote workstations and servers
- Allows for mass photo importation into Active Directory
- Over 100 preconfigured reports can also be customized, or create your own - without scripting
- Schedule tasks to be performed at your convenience and on a recurring basis
- Ensures error-free execution through simulation
- Search and replace any attribute value
- Use the custom tools wizard to deliver tools and tasks directly to your team
- Add, modify or delete contacts, users, groups and computers
- Reset passwords for users
- Resynch Active Directory
- Get device-specific information using WMI controls
- Create user home directories (shares) without having to enter each one individually
- Find nested groups

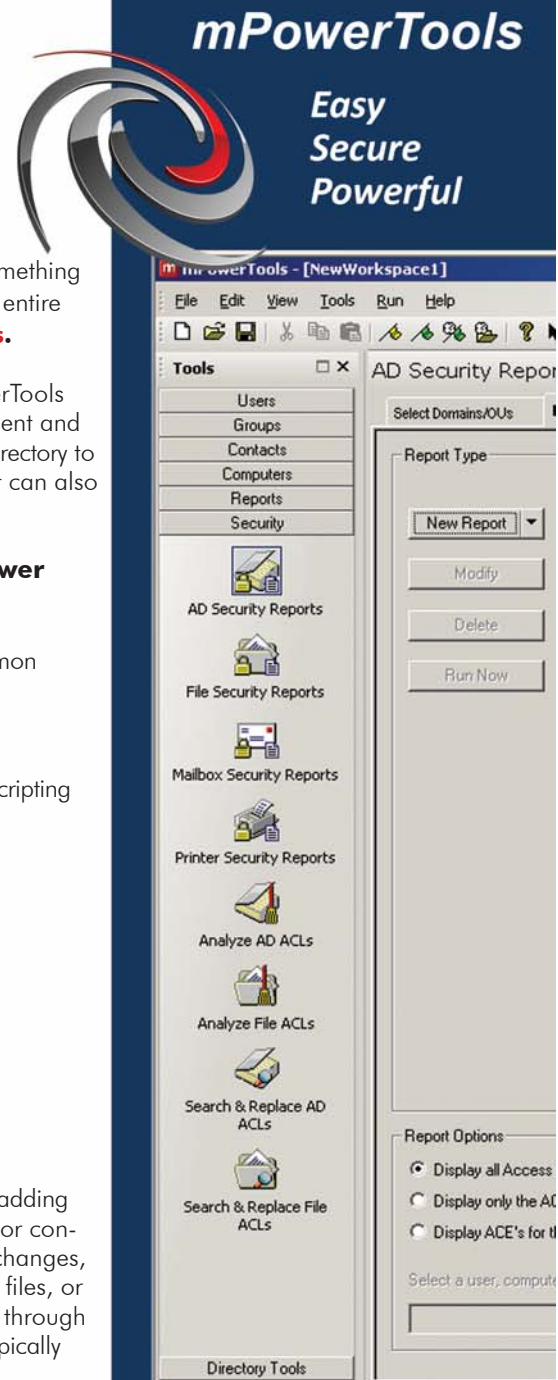
Completes Numerous Tasks in One Single Execution

mPowerTools allows you to perform multiple Active Directory tasks at once. Whether you're adding users, deleting or disabling user accounts, resetting passwords, modifying AD attributes, or configuring Exchange mailboxes, mPowerTools does it all in a snap. To facilitate these bulk changes, mPowerTools allows you to import user names from various sources such as spreadsheet files, or from the built-in Reporting Tools. Of course, you can always use mPowerTools to browse through Active Directory to select users as well. Either way, mPowerTools completely eliminates the typically labor-intensive approach to Active Directory management tasks.

Delivers Customized Reports that Allow You to Optimize mPowerTools' Other Features

mPowerTools delivers a custom reporting tool that easily enables you to construct and filter data in AD. mPowerTools provides several standard reports that can be customized to fit your environment. Or you can create your own reports from scratch. You can construct a customized report, for example, to report on expired or inactive users, thus, simplifying the process of locating and deleting unused accounts. You can also report on items such as the size/message counts in a user's mailbox (inbox, sent, deleted), or, by utilizing the functionality of WMI, you can gather system-specific information like BIOS, processor and adapter properties, service packs installed and numerous other OS and hardware related properties.

The output report can be imported directly back into mPowerTools allowing you to take immediate action on any issue or concern that was uncovered by the report. With mPowerTools you won't be stuck using troublesome scripts, or relying on a third-party reporting tool, because mPowerTools goes it alone. *All you need to know is what you want to report on!*



"What really grabbed my attention from day one was how quickly I was able to remove 500 user folders and profiles from one of our servers; these were users that had left in the last year. This would have taken around a day to script and possibly just as long to test before deploying. I achieved the task with mPowerTools in less than 15 minutes even though I was not familiar with the product."

– Mian, Technical Support
UK healthcare trust operating 2
hospitals providing adult services
to more than ½ million patients yearly;
employing approx. 6,900 staff

Key Features:

- Search and replace any attribute value
- Add, delete and modify user, group, contact, and computer attributes and properties
- Move users, groups, contacts and computers in bulk
- Create, configure and delete Exchange mailboxes
- Clean up and undo changes made to ACLs and remove deleted or unknown SIDs in AD and on Files/Shares
- Distribute customized tools to other admins
- Report on account data and resource usage for Users, Groups and Contacts
- Use report data to drive other tools
- Schedule tasks to run at your convenience
- Customize UI to mandate data entry on specific fields
- Launch pre-configured tools from desktop

Minimum Requirements:

- A PC running MS Windows 2000/2003/XP/Vista/2008
- Connection to a Windows 2000/2003/2008 network
- 100MB of disk storage for the software

Convenient, Schedule Execution During Off-peak Hours

Administrators and networks aren't always free at the same time, and that's where mPowerTools comes in handy. mPowerTools allows you to perform tasks when it's convenient for you, and then schedule these tasks for distribution over the network, during off-peak hours. Your tasks will be checked off your list, and, you can refer to the logs created during execution for added peace of mind. With mPowerTools, you can schedule your standard reports to run weekly, thereby keeping management informed and allowing you to look efficient and professional.

Ensures Error-free Execution through Simulation

With the push of a button, mPowerTools simulation mode allows you to validate all of the data that has been entered. If there is an error in the data, the cursor will move to the erroneous field and a warning message will be displayed. Designed to expose problems such as incorrect access rights without actually performing the requested action, mPowerTools ensures that no errors will occur when the task is executed, or when it is scheduled to run later.

Simple, Task-oriented Graphic User Interface

Administrators are busy enough without having to muddle through various screens in an attempt to find the right configurations for executing their tasks. mPowerTools provides the user with a Tools Selection Bar in the left-hand column that identifies tasks such as Add User, Reports, Delete User, and Reset Password. By selecting the appropriate tool, and saved configurations, the user has little to do prior to executing the tasks, streamlining the entire process. mPowerTools is so secure and easy to use that you'll be handing off common tasks in no time, allowing you to focus on the complicated, mission-critical responsibilities that are essential to running an optimized network.

Ensures Seamless Help Desk Delegation of Common Tasks

Whether you're adding users or resetting passwords, mPowerTools provides you with a simple, secure interface to delegate your most common tasks, freeing up your skilled administrators. You can rest easy knowing that the interface locks down tools and fields, allowing only the tasks you hand off to be executed. You can even set mandatory entry fields, ensuring that all pertinent information is entered for every task. And, for troubleshooting later on, you'll be able to retrace all of the steps taken through event-driven audit logs.



For more information contact:



11811 N. Tatum Blvd., #P153
Phoenix, Arizona 85028 USA
Phone: 602-667-8900 Fax: 602-840-2612
info@namescape.com | www.namescape.com